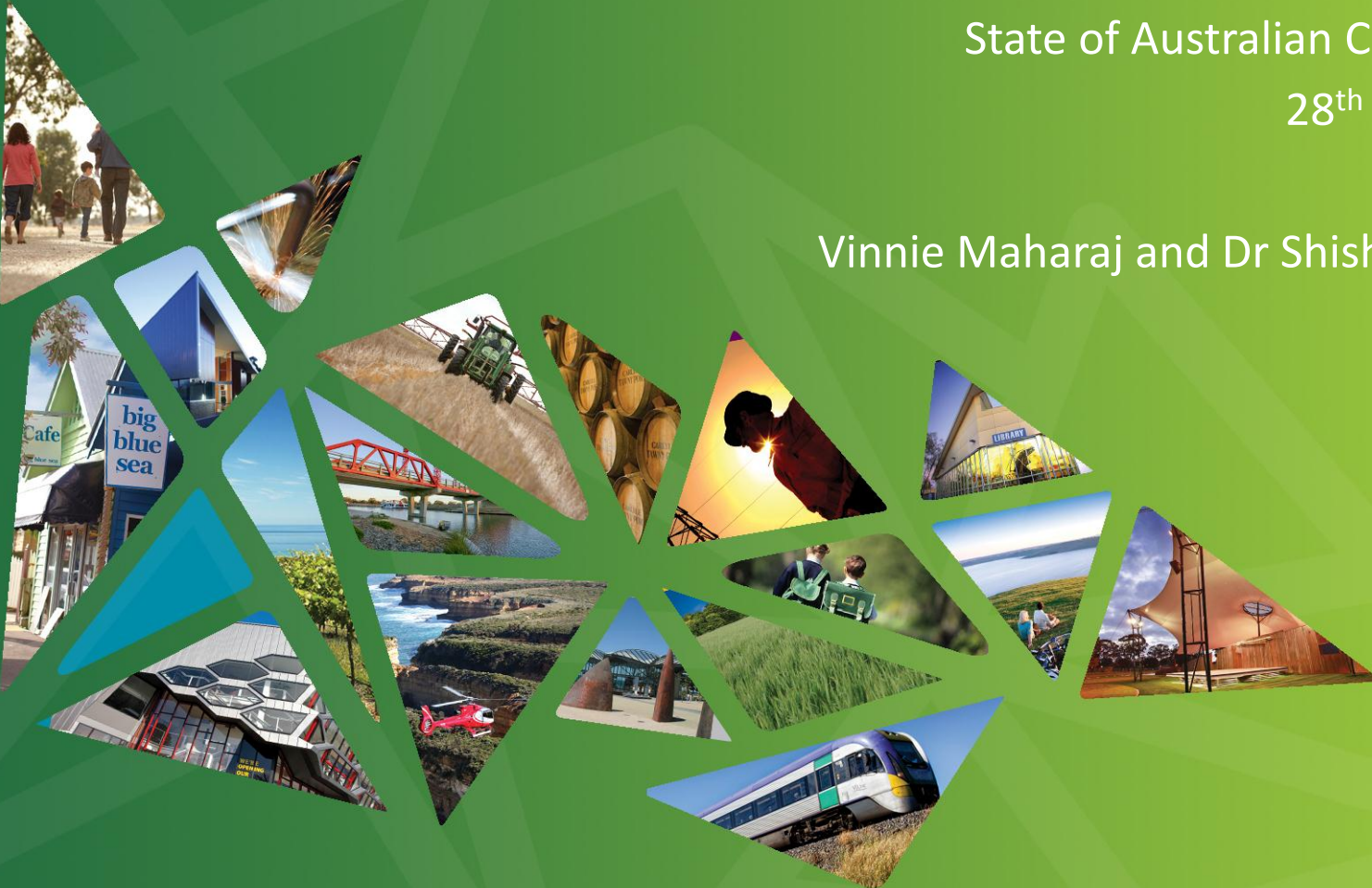


Accelerating regional city growth in Victoria: evidence and policy approaches

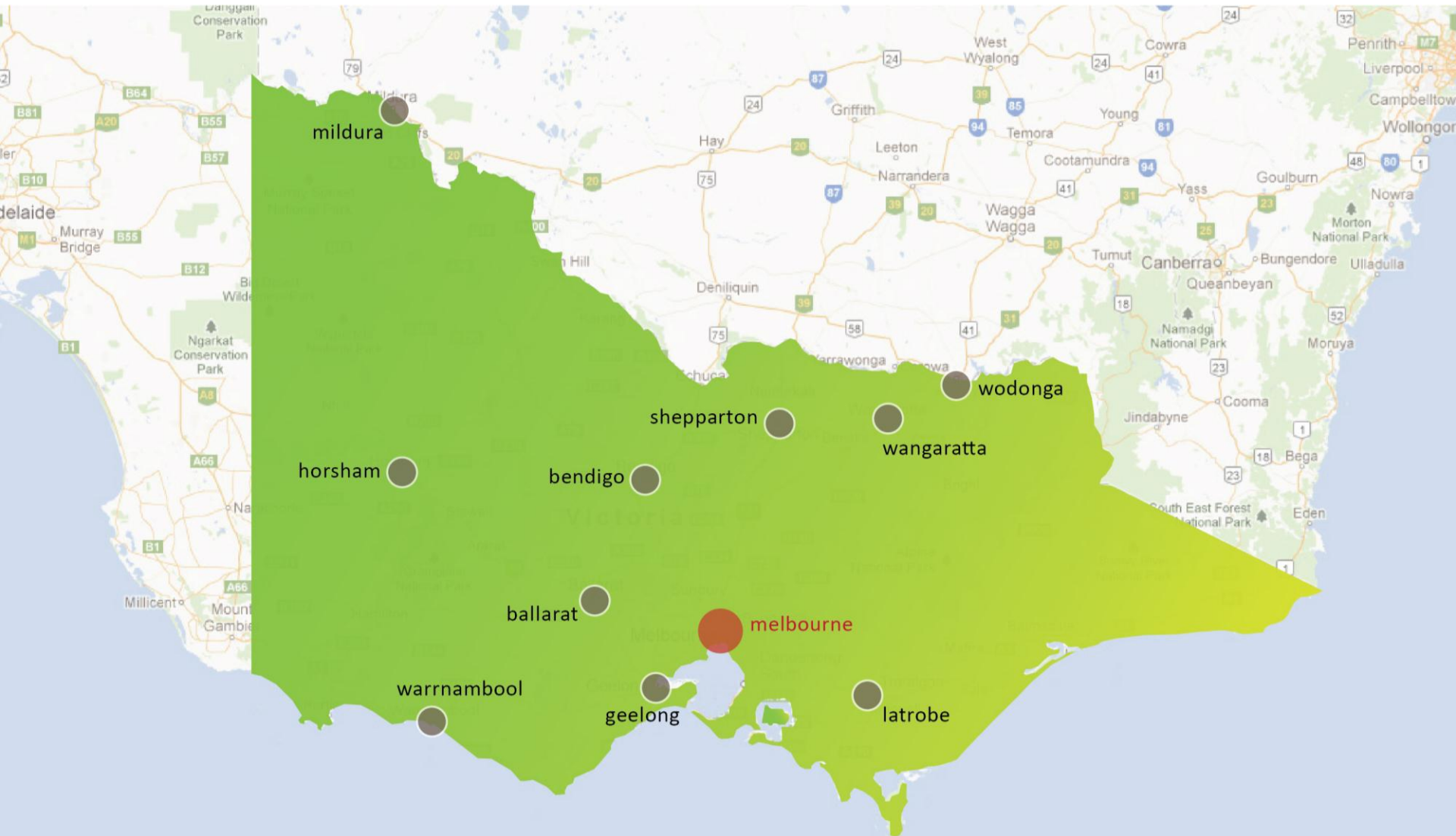
State of Australian Cities 2013

28th Nov 2013

Vinnie Maharaj and Dr Shishir Saxena



Regional Cities





Structure

- Policy rationale
- Analysis of growth enablers & constraints
- Regional policy implications and available policy instruments



Policy rationale

- Existing platform for growth
- Valuable value-adding support to rural hinterlands
- Ensure sustainable growth
- Under-utilised potential

Literature review

Growth enablers

- Protection & enhancement of natural endowments
- Identifying & exploiting competitive advantage
- Interactions with urban 'mega-regions'
- Ability to augment human capital endowment

Constraints

- Social costs of unemployment
- Ability of workers to transition/ up-skill/ re-skill

institutional
arrangements:
**place-based
approach**

Contemporary growth analysis

City/ LGA	GRP average annual growth (01-11)	Classification
Greater Bendigo	3.4%	High growth
Wodonga	3.2%	
Ballarat	2.8%	
Greater Geelong	2.7%	
Warrnambool	2.5%	
Wangaratta	1.5%	Low growth
Horsham	1.4%	
Greater Shepparton	1%	
Latrobe	0.7%	
Mildura	0.5%	

Growth enablers/constraints



Growth Factor	Indicator	Improvement areas
Human capital	% completed higher education	Workforce activation & developing skills
	% participation in higher education	Higher education participation
	% unskilled/semi-skilled workers	
Industry & employment	Employment growth	Productivity growth
	Exports growth	Innovation & entrepreneurial spirit
	Share of manufacturing, services	Supporting export orientated businesses
	Non-employing businesses per capita	Adaptive capacity of firms and workers
Infrastructure & connectivity	% of population with access to transport	Key location advantages and transport access
	% of households with access to internet	Access to regional, national & international hubs
Liveability	Strong inward migration)	Surpassing population threshold & mobility
	Help from family, friends & neighbours	Sustaining population growth
	Increasing population density	Access to social opportunities

Regional VIC and NSW analysis



physical capital

property
market

human capital

liveability

Industry
structure/
diversity

Economic Growth (GRP)

institutions

connectivity

innovation

geography

socio-economic
characteristics

Policy Implications and Options



Focus areas	Place-based approach	Policy instruments
Skills development & educational aspiration	Regional workforce development planning	Proactive brokering & facilitation Incentives for skilled migrants Better information Student exchange programs University collaboration
Business, innovation & entrepreneurship	Regional innovation strategies	International technology transfer schemes Global & regional networking of firms Cluster policies Proactive brokers Innovation vouchers Innovation management training Management advice Mentoring programs Financial support for start-ups & innovators

Policy Implications and Options



Policy issue	Place-based approach	Policy instrument
Market access	Regional infrastructure plans	Provision of consistent information
	Network & corridor planning	Efficient freight transportation infrastructure
	National & int'l engagement	Trade fairs & missions
	Digital economy strategies	Regional funding for infrastructure
Urban transformation	Precinct structure plans (greenfield and CBD renewal)	Infrastructure coordination
	Regional transport planning	Expert assistance
		Funding & financing tools
		Brokering & facilitation
		Sustainable transport planning
Institutional capacity	Local area agreements	Leadership & skills development training
		Place-based budgeting
		Mentoring



Thank You

Vinnie Maharaj: vinnie.maharaj@rdv.vic.gov.au

Shishir Saxena: SSaxena@sgsep.com.au