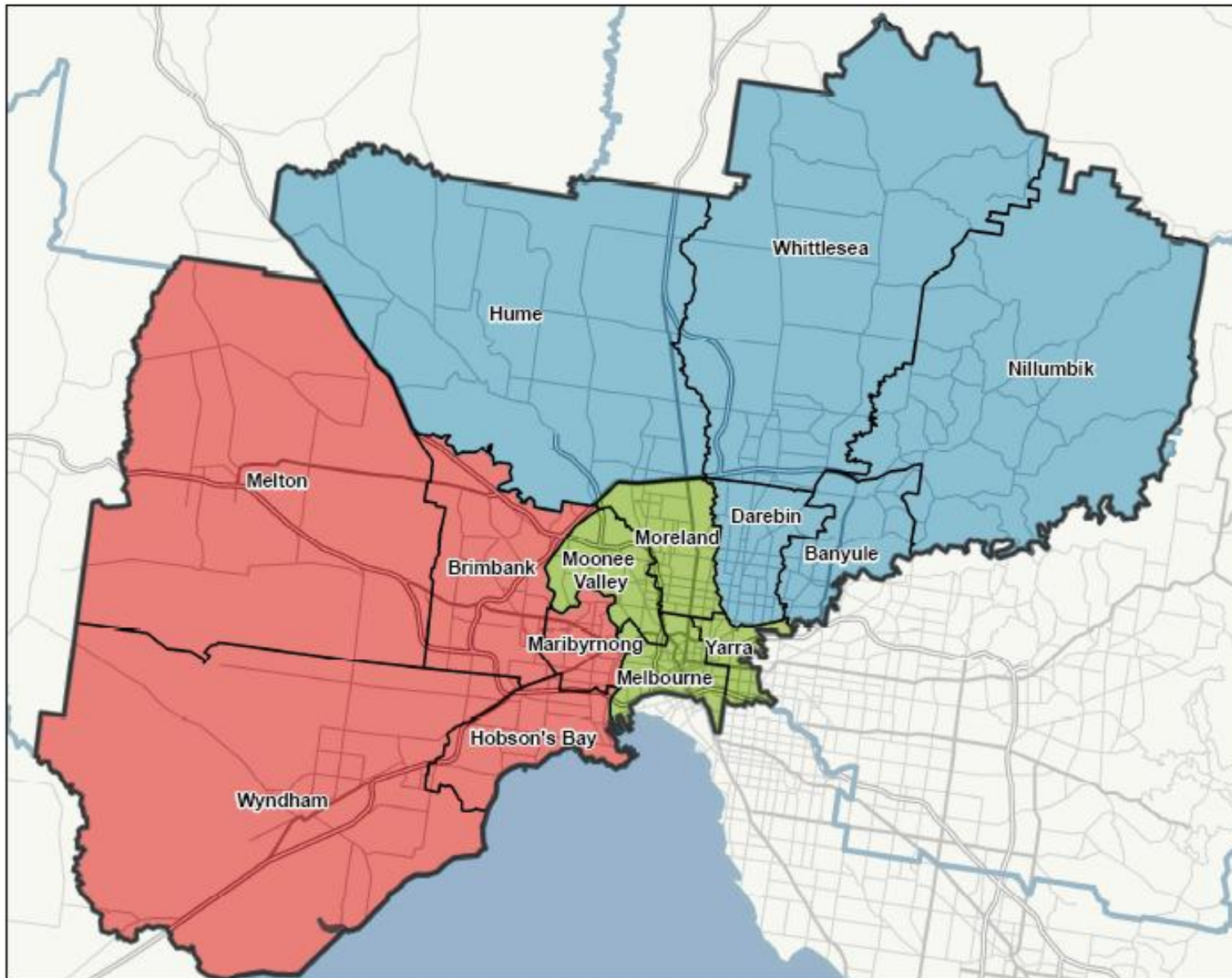


The Regional Health & Wellbeing Implementation Strategy: Implications for Governance and Community Capacity

Dr Iain Butterworth

- Manager Public Health & Western Area, Department of Health North and West Metropolitan Region
- Honorary Associate Professor, University of Melbourne

Northern and Western Metropolitan Region - Planning Areas



Legend

Planning Areas

Inner North West Area

Northern Area

Western Area

Local Government Area

Regions


About the data

Planning Areas - based on local government area and provided by Northern and Western Metropolitan Region, DoH

Local Government Areas - ABS (2010)

Regional Boundaries - derived from LGA

Basemap data from DSE (2011)

Map prepared by :
Modelling, GIS and Planning Products
Business Planning and Communications
Strategy and Policy
Department of Health
July 2011
GDA 1994 VICGRID94 

Outline

1. Role of health sector in urban governance
2. Role of University-community partnerships
3. Governance and community capacity
4. Regional Health & Wellbeing Implementation Strategy
5. Evidence of change
6. Issues, implications and opportunities for governance and action

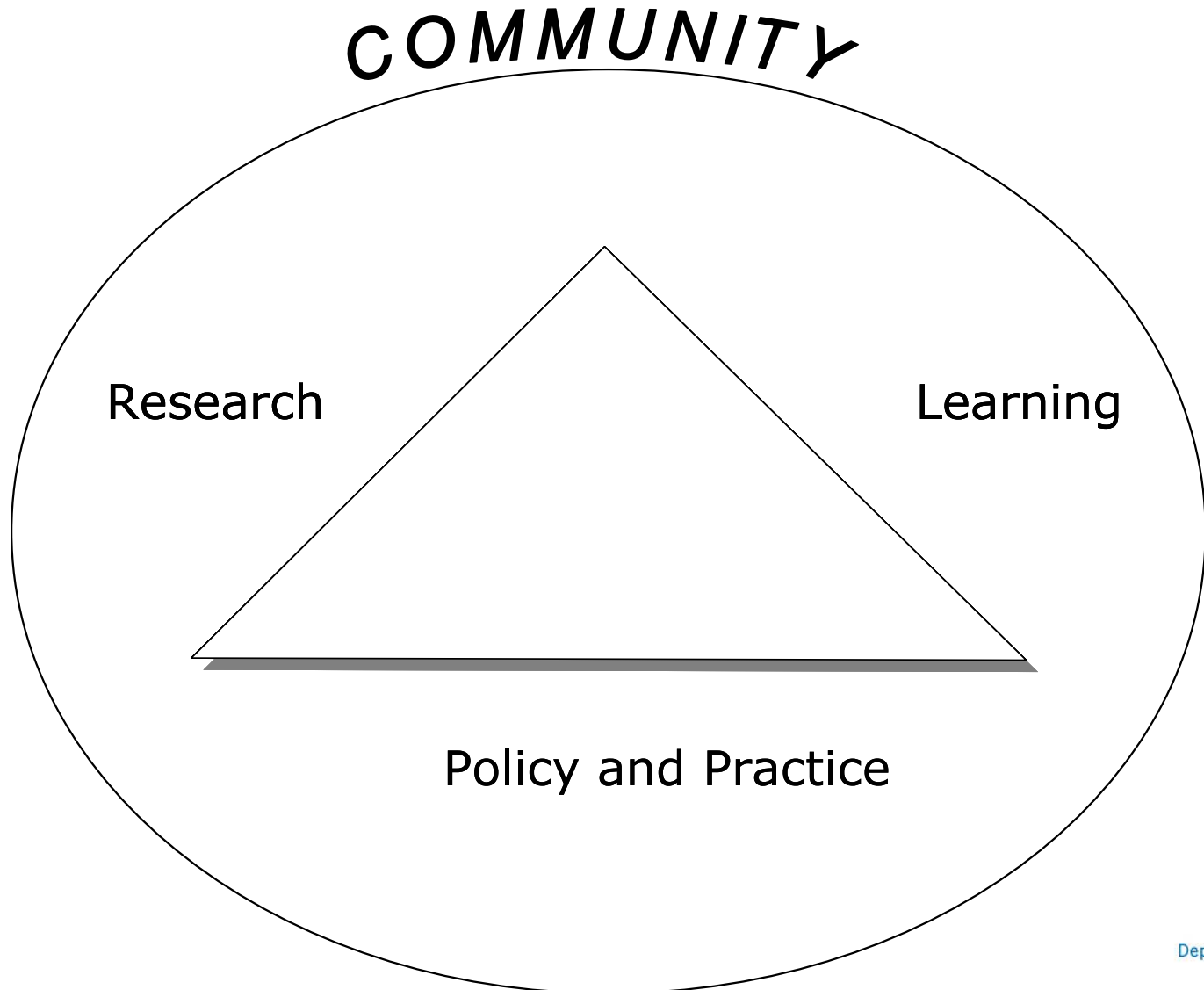
Healthy City Model



Trevor Hancock, 1993, Health Promotion International, Vol. 8, No. 1



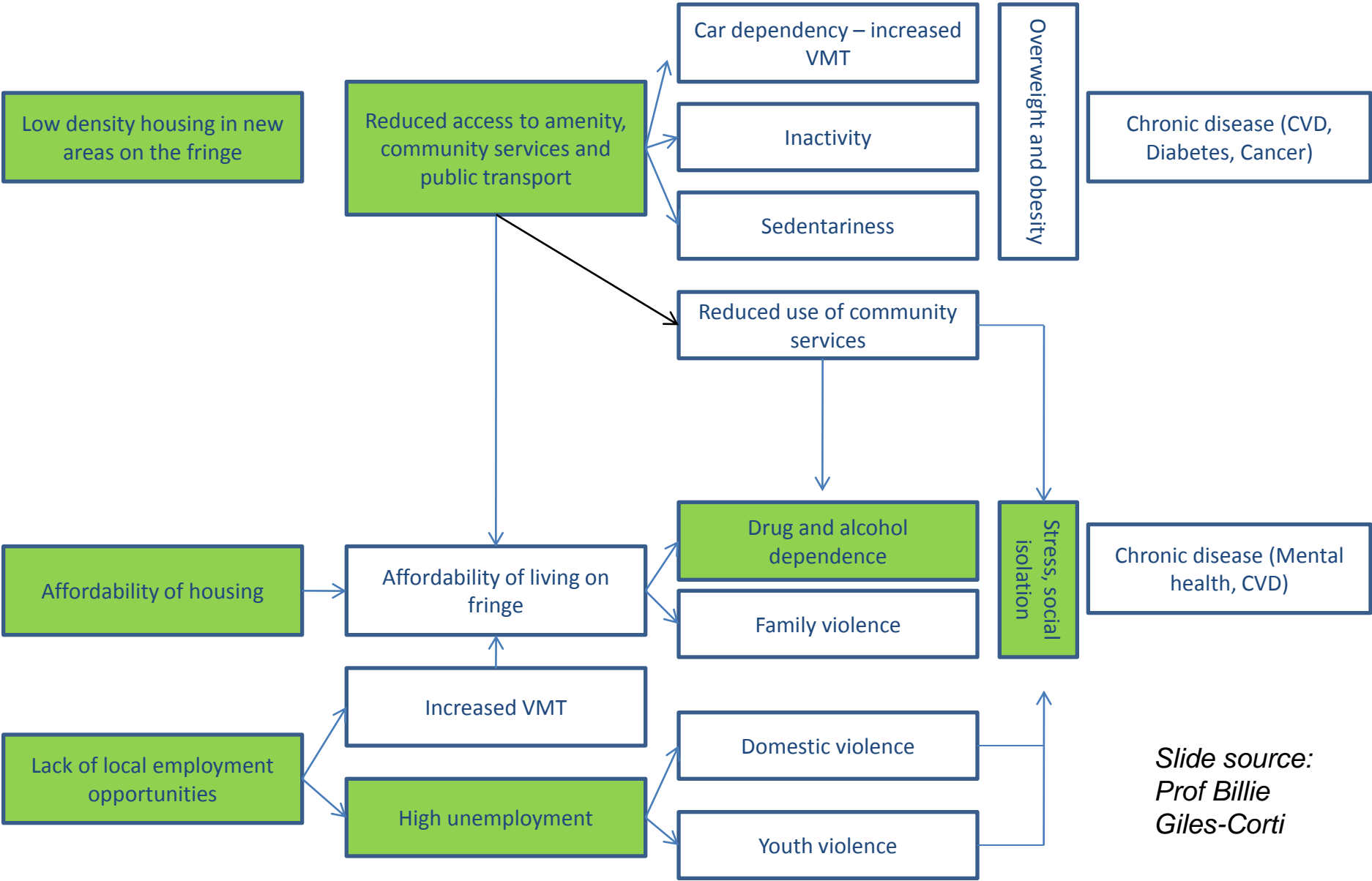
Melbourne University Partnership



Melbourne University Partnership

- Population Health Short Courses
- Regional Operating Model Evaluation 2011-12
- Regional Management Forum - key stakeholder consultations
- AURIN Integrated Data Platform & Portal
- Place, Health and Liveability Research Program
- Liveability Indicators report
- Municipal public health and wellbeing planning evaluation and support
- Metropolitan Planning Strategy
- Centre of Excellence in Healthy Liveable and Equitable Communities
- Regional Management Forum Benchmarking research 2013-14

Preliminary potential pathways of social determinants of health

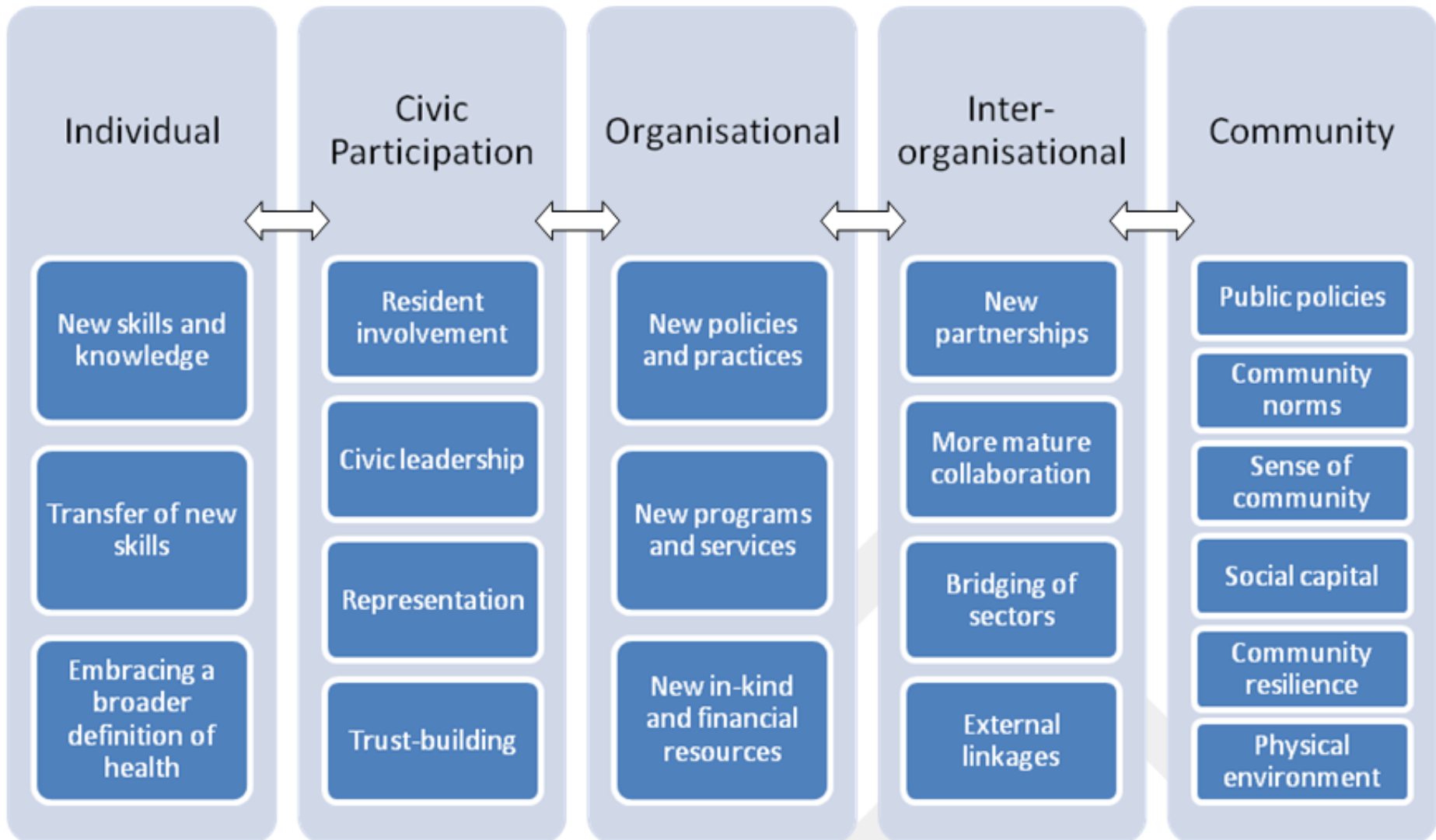


Slide source:
Prof Billie
Giles-Corti

Community Capacity Framework

(Kegler, Norton & Aronson, 2003)

health



Regional Health & Wellbeing Implementation Strategy

Victorian Prevention
and Population Health
Advisory Board

Victorian Public Health and
Wellbeing Plan 2011-2015

Regional Health & Wellbeing Implementation Strategy
RMF Priorities: Transport, housing education, employment

Regional Management Forum
*Local Council CEOs,
Regional Directors*

Melbourne
University
Partnership

DH NWMR
Project Team
(Secretariat Support)

**Regional Health & Wellbeing
Advisory Group**

Western Area
Governance
arrangements

Inner NW
Governance
arrangements

Northern Area
Governance
arrangements

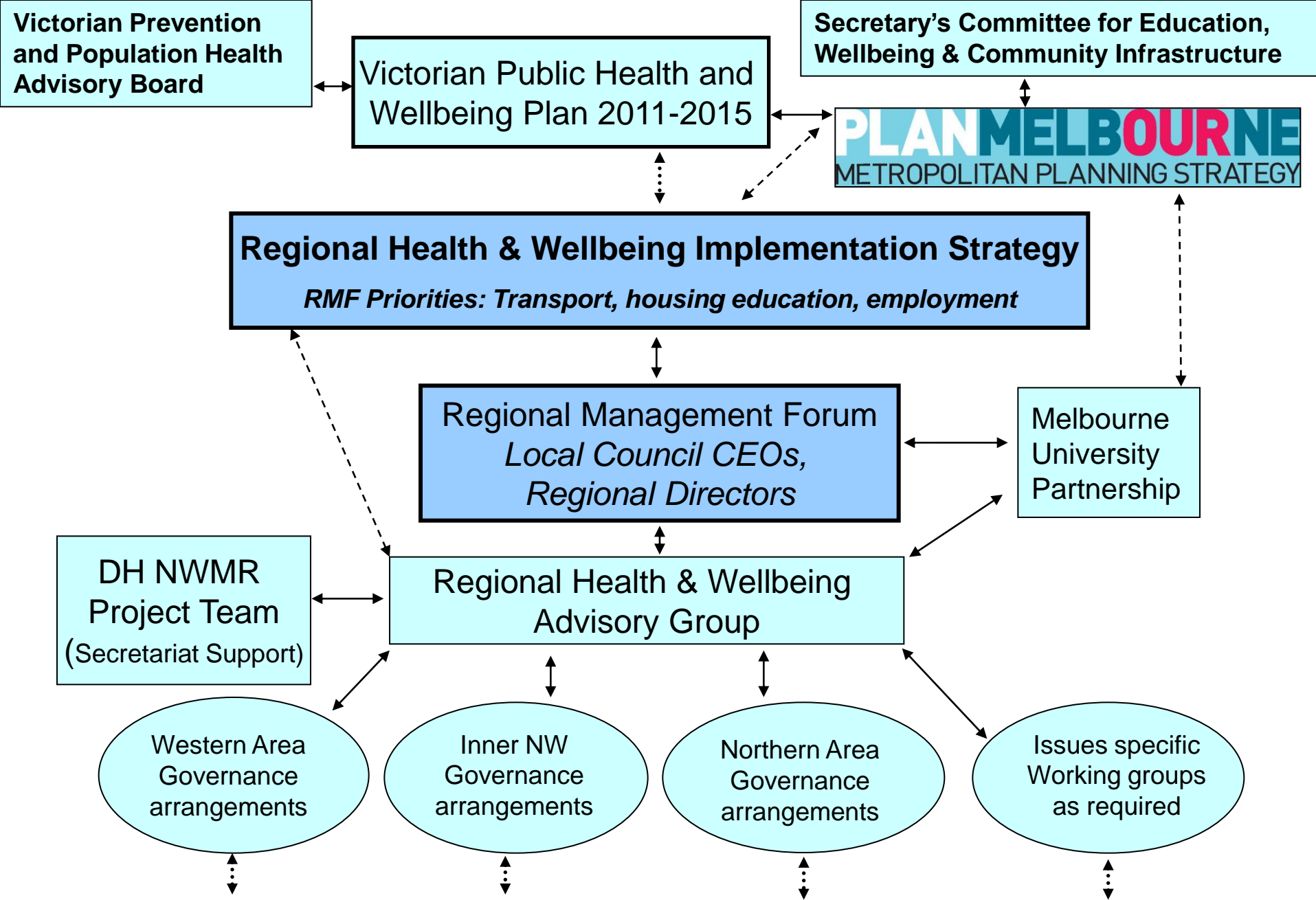
Issues specific
Working groups
as required

Integrated sub-regional engagement of: Municipal Public Health Planning, Primary Care Partnerships, Medicare Locals, Integrated Health Promotion, Community Health, Primary Care & Population Health Advisory Committees.

Key themes

- + Delivering jobs and investment
- + Housing choice and affordability
- + A more connected Melbourne
- + Liveable communities and neighbourhoods
- + Environment and water
- + A state of cities
- + Implementation: delivering better governance



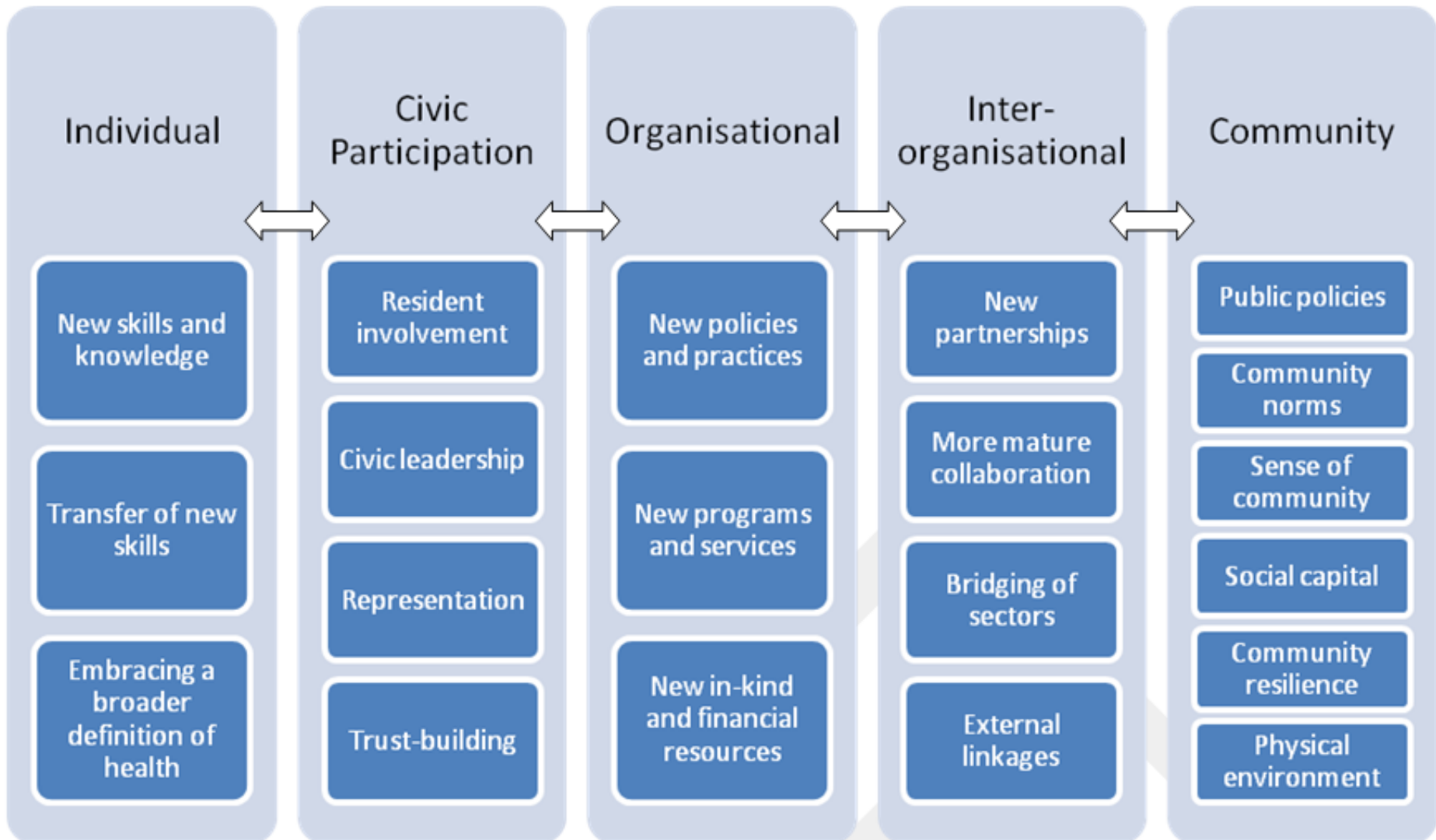


Integrated sub-regional engagement of: Municipal Public Health Planning, Primary Care Partnerships, Medicare Locals, Integrated Health Promotion, Community Health, Primary Care & Population Health Advisory Committees.

Community Capacity Outcomes

(Kegler, Norton & Aronson, 2003)

health



Change

- Downsizing
- Amalgamations
- Restructuring
- Churn
- Growth

Key Messages

- Regions provide critical leadership at Regional and sub-regional level
 - Two-way conduit between state and local levels
- Health Sector can provide sub-regional leadership in local integrated area planning
 - Place making, Laverton
- University engagement is essential
 - Validating, leveraging resources, evidence, linking research-learning-policy/practice, business continuity, governance